



Classic Solutions

Entrance Mats • Indoor

Classic Solutions mats feature a slip-resistant rubber backing and a solution-dyed carpet surface designed to stop dust, dirt, and moisture at your door and provide a safe walking surface.



- Solution-dyed nylon fibers provide superior colour and wash fastness.
- 100 Rubber backing prevents curling and cracking in all types of weather.
- LUTRADUR™ primary substrate will not fray, reduces linting, and provides a strong bond between the rubber and the carpet.
- Fibers are resistant against crushing and allow dirt to filter into the mat rather than remaining on top of the carpeted surface.
- Bleach / UV resistant.
- Made from 100% recycled Nylon yarn (ECONYL)



Classic Solutions

Entrance Mats • Indoor



Standard Sizes (cm)

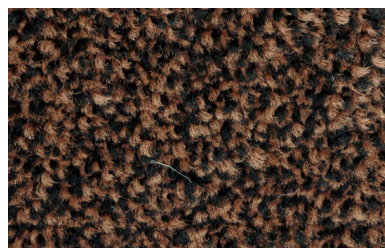
60x85	115x250
75x85	115x300
85x115	150x200
85x150	150x240
85x300	150x250
115x180	150x300
115x200	200x200*
115x240	200x300*

Maximum size: 200 x 550 cm

Size Tolerance: +/- 2%

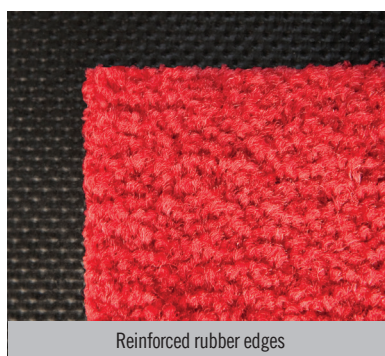
*Grey and Anthracite are the only colours available in widths wider than 150 cm. All other colours can be purchased in widths wider than 150 cm with a minimum order quantity of 100 linear meters.

**Only available in 85, 115 cm widths

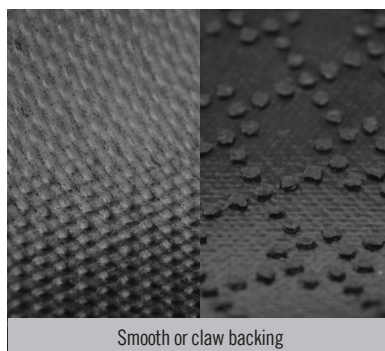


Made with 100% Regenerated Nylon

ECONYL®

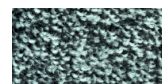


Reinforced rubber edges

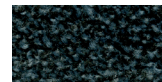


Smooth or claw backing

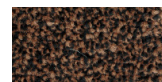
#10*
grey



#20
slate grey



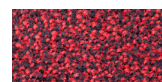
#30
brown



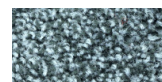
#50*
anthracite



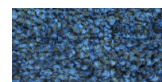
#60
red**



#70
blue steel



#80
blue**



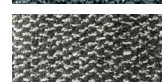
#90
black mink



#103
silverstone



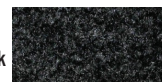
#104
black
granite



#105
clear red



#107
clear black



#130**
clear
granite



Specifications

Yarn: 100% ECONYL® regenerated BCF polyamide, twisted & heat set multifilaments

Carpet weight: 820 gr/m²

Rubber: Nitrile EXS™ (Border 2.5 mm / Center 1.5 mm)

Total weight: 2.820 gr/m²

Also available in 3 mm rubber backing