

TARALAY INITIAL

gerflor.com



Gerflor[®]
theflooringroup

TARALAY INITIAL

ECO RESPONSIBLE SOLUTION UMWELTBEWUSSTE LÖSUNGEN



100 % recyclable
100 % recycelbar



Health & Wellness
Anti-viral and **anti-bacterial** activity
Acoustic: reduction by **19 dB (Comfort)**
Indoor air quality: **TVOC emissions 10 times better** than norms requirements

Gesundheit und Wohlbefinden
Antivirale und **antibakterielle** Aktivität
Beste Raumluftqualität: TVOC-Emissionen
10-mal niedriger als die Normvorgaben
Hervorragende Trittschalldämmung
(19 dB Komfort)



Made in France

WE CARE | WE ACT.
Our commitments for a sustainable future

DESIGN & PERFORMANCE



Ultra realistic wood designs
Ultrarealistische Holzdessins



Beautiful floors thanks to **metallic inks**
*Besondere Tiefenwirkung durch **Metallic-Effekte***



Mat Effect
***Matteffekt** für ein natürliches und hochwertiges Erscheinungsbild*



All references available in **compact or comfort** version
*Alle Referenzen in **Kompakt- oder Komfortausführung***



Performance indentation /acoustic
Comfort **0.10 mm/19 dB**
Compact **0.03 mm/6 dB**
*Besonders gutes Verhältnis von Resteindruck zu Trittschalldämmung
Komfort **0.10 mm / 19 dB**
Kompakt **0.03 mm / 6 dB***



Easy and economical maintenance solution: no wax required
***Einpflegefrei und besonders leicht zu reinigen**, reduziert erheblich den Einsatz von Wasser und Reinigungsmitteln*

MORE THAN FLOORS... GLOBAL FINISHES SOLUTIONS

MEHR ALS NUR EIN BODENBELAG:

More information on gerflor.com

Für weitere Informationen besuchen Sie: gerflor.de



DESIGN SKIRTING (MDF) / SEMI-RIGID SKIRTING VYNAFLEX MDF DEKOR-SOCKELLEISTE / VINYL DEKOR-SOCKELLEISTE



WELDING RODS SCHWEISSSCHNÜRE



PVC COVE FORMER HOLKEHL-PROFILE



ENTRANCE MATS SAUBERLAUF



			TARALAY INITIAL COMFORT	TARALAY INITIAL COMPACT
Bostonian	0959	Brown	●	●
	0960	Grey	●	●
	0961	Honey	●	●
Diversión	0049	Carbone	●	●
	0047	Ivoire	●	●
	0515	Kiwi	●	●
	0962	Marine	●	●
	0949	Soleil	●	●
	0824	Souris	●	●
Esterel	0825	Turquoise	●	●
	0636	Blond	●	●
Filament	0826	Grey	●	●
	0799	Light	●	●
Habana	0828	Beige	●	●
	0797	Ivory	●	●
Miami	0966	Abricot	●	●
	0968	Ciel	●	●
	0965	Foret	●	●
	0951	Litchee	●	●
	0967	Mer	●	●
	0969	Paon	●	●
	0963	Perle	●	●
	0950	Sable	●	●
	0952	Soleil	●	●
	0964	Souris	●	●
Noma	0588	Clair	●	●
	0698	Naturel	●	●
Ranch	0773	Ranch	●	●
	0953	Anthracite	●	●
Renzo	0590	Steel	●	●
	0973	Alu	●	●
Spider	0957	Cuivre	●	●
	0954	Dore	●	●
	0975	Emeraude	●	●
	0956	Grenat	●	●
	0955	Perle	●	●
	0976	Quartz	●	●
	0974	Saphir	●	●
	0974	Saphir	●	●
Strada	0790	Chrome	●	●
	0465	Ciment	●	●
Twist	0791	Metallic	●	●
	0978	Blond	●	●
	0980	Brown	●	●
Urban	0977	Grey	●	●
	0979	White	●	●
	0958	Beige	●	●
	0035	Gris	●	●
	0037	Souris	●	●

TARALAY INITIAL



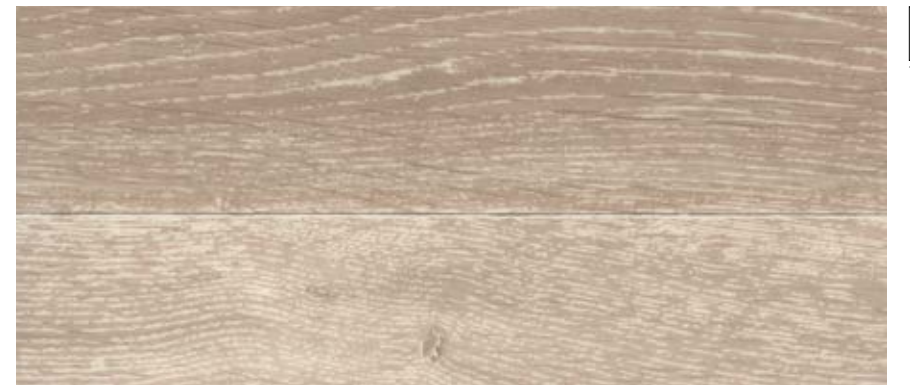
0979 - Twist White



0797 - Habana Ivory



0773 - Ranch



0588 - Noma Clair



0828 - Habana Beige



0799 - Filament Light



Pas de lame
Pas de raccord/
No plank
Continuous
design



0961 - Bostonian Honey



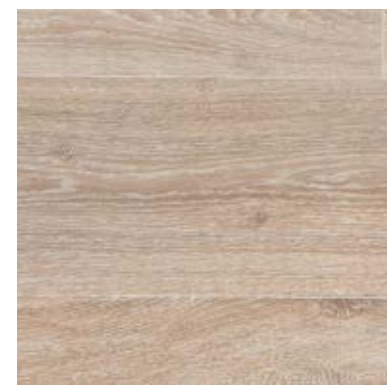
0978 - Twist Blond



0960 - Bostonian Grey



0977 - Twist Grey



0698 - Noma Naturel



0636 - Esterel Blond



0590 - Renzo Steel



0953 - Ranch Anthracite



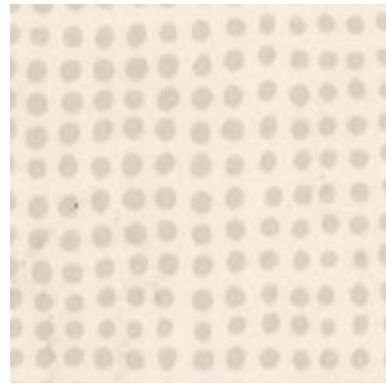
0980 - Twist Brown



0959 - Bostonian Brown



TARALAY INITIAL



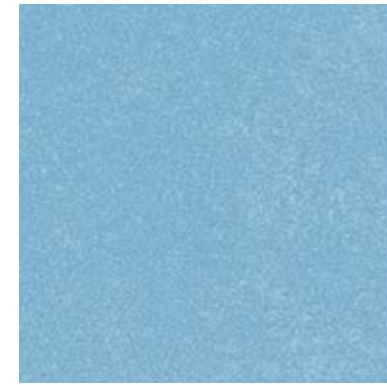
0047 - Diversion Ivoire



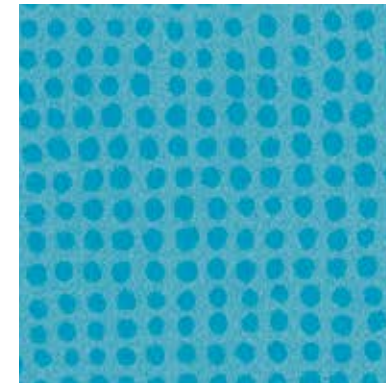
0958 - Urban Beige



0954 - Spider Dore



0968 - Miami Ciel



0825 - Diversion Turquoise



0974 - Spider Saphir



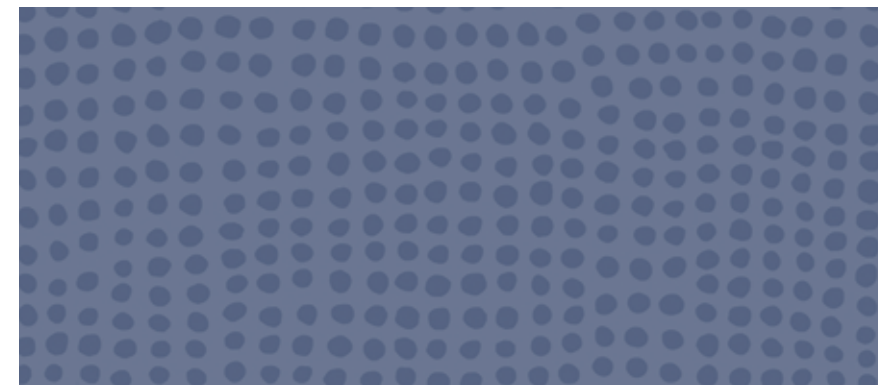
0950 - Miami Sable



0952 - Miami Soleil



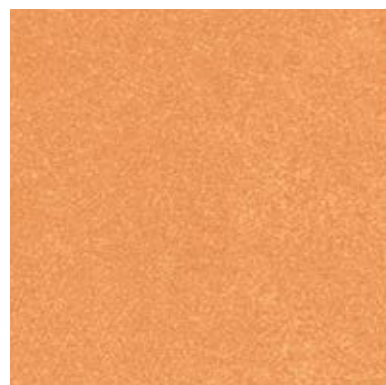
0949 - Diversion Soleil



0962 - Diversion Marine



0967 - Miami Mer 



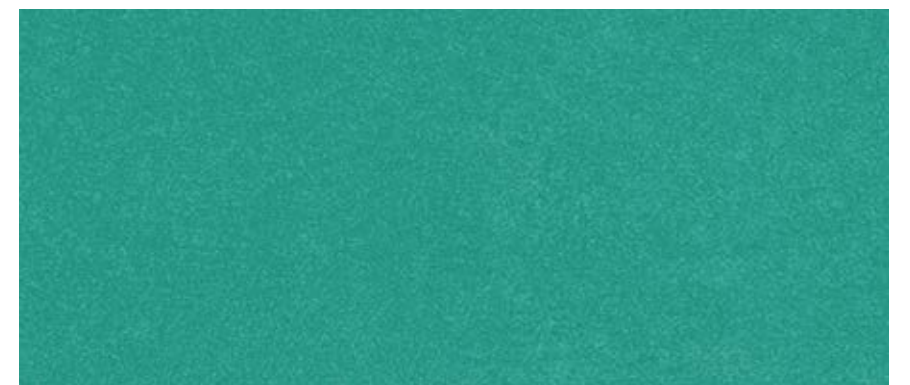
0966 - Miami Abricot



0976 - Spider Quartz



0515 - Diversion Kiwi



0965 - Miami Foret 



0951 - Miami Litchee



0956 - Spider Grenat



0975 - Spider Emeraude



0969 - Miami Paon

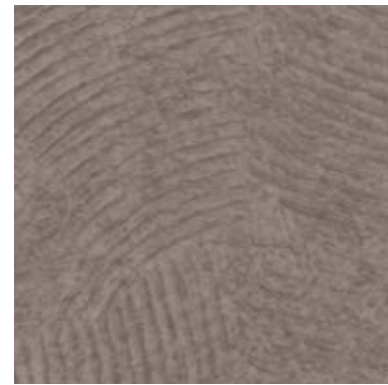
TARALAY INITIAL



0037 - Urban Souris



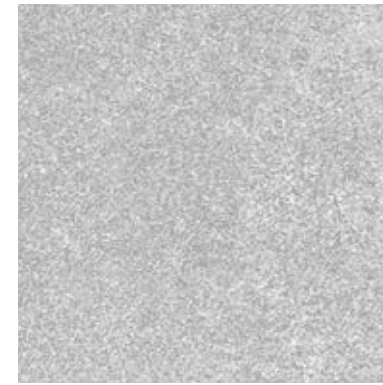
0790 - Strada Chrome 



0035 - Urban Gris



0955 - Spider Perle 



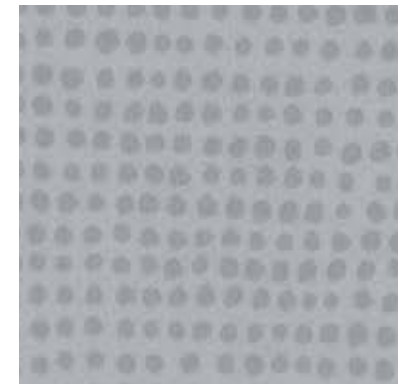
0963 - Miami Perle 



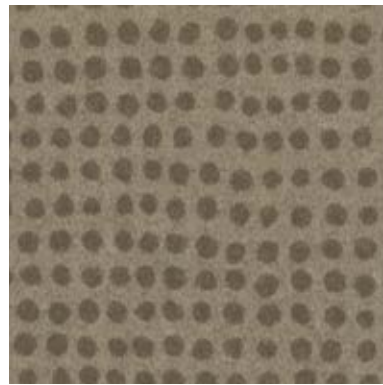
0826 - Filament Grey



0465 - Strada Ciment



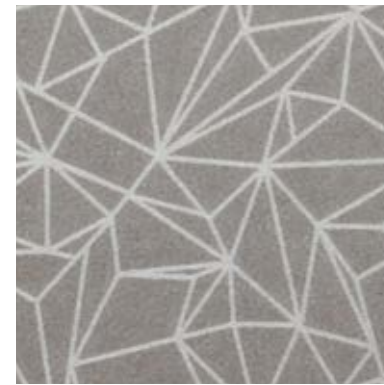
0824 - Diversion Souris



0049 - Diversion Carbone



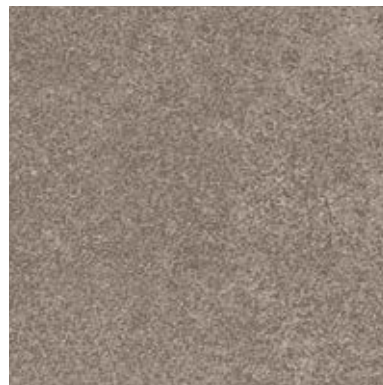
0957 - Spider Cuivre



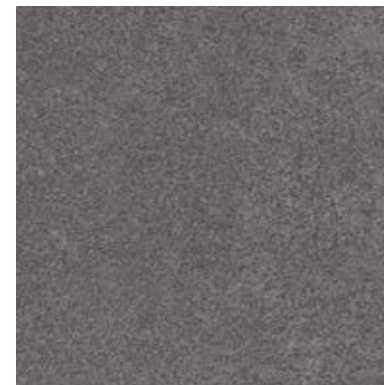
0973 - Spider Alu 



0791 - Strada Metallic



0970 - Miami Taupe 



0964 - Miami Souris 





TARALAY INITIAL COMPACT

TARALAY INITIAL COMFORT

DESCRIPTION / BESCHREIBUNG

Total Thickness / Gesamtdicke	EN ISO 24346	mm	2.00	3.35
Thickness of the wearlayer / Dicke der Nutzschrift	EN ISO 24340	mm	0.70	0.65
Weight / Flächengewicht	EN ISO 23997	g/m ²	2635	2825
Width of sheet / Rollenbreite	EN ISO 24341	cm	200	200
Length of sheet / Rollenlänge	EN ISO 24341	ml	25	25

CLASSIFICATION / KLASSIFIKATION

Norm/Product Specification / Produktnorm	-	-	EN ISO 10582	EN ISO 11638
European Classification / Europäische Klassifizierung	EN ISO 10874	Class	34-43	34-42
Impact sound insulation / Trittschallverbesserungsmaß	EN ISO 717-2	dB	6	19
Room Impact / Raumschall	NFS 31 074	dB	-	< 65
Fire Rating / Brandverhalten	EN 13501-1	Class	Bfl-s1	Bfl-s1
Static Electrical Propensity / Begehaufladung	EN 1815	kV	< 2	< 2
Slip Resistance Wet / Rutschhemmung	DIN 51 130	Class	R10	R10






PERFORMANCES / TECHNISCHE EIGENSCHAFTEN

Wear Resistance / Verschleißverhalten	EN 660.2	mm ³	≤ 2.0	≤ 2.0
Wear Group / Verschleißgruppe	QB 30	group	T	T
Type Binder content / Bindemittelgehalt	EN ISO 10582	type	I	-
Dimensional stability (norm) / Maßstabilität (norm)	EN ISO 23999	%	≤ 0.40	≤ 0.40
Residual Indentation / Resteindruck	EN ISO 24343-1	mm	≤ 0.10	≤ 0.20
Residual Indentation (average measured value) / Resteindruck	-	mm	~ 0.03	~ 0.10
Castor chair test / Stuhlrollenbeanspruchung (type H)	ISO 4918	-	OK	OK
Thermal Conductivity / Wärmeleitfähigkeit	EN ISO 10456	W/(m.k)	0.25	0.25
Colour Fastness / Lichtechtheit	EN 20 105 - B02	degree	≥ 6	≥ 6
Surface Treatment / Oberflächenvergütung	-	-	PROTECSOL®	PROTECSOL®
Chemical Products Resistance / Verhalten gegenüber Chemikalien ⁽¹⁾	EN ISO 26987	-	OK	OK
Anti-bacterial activity / Antibakterielle Aktivität (E. coli - S. aureus - MRSA) ⁽²⁾	ISO 22196	-	> 99 % inhibits growth	> 99 % inhibits growth
Anti-viral activity (Human coronavirus) after 2 h / Antivirale Aktivität (Humanes Coronavirus) nach 2 Std ⁽²⁾	ISO 21702	-	> 99,3 % (virucidal activity)	> 99,3 % (virucidal activity)


ENVIRONMENT/INDOOR AIR QUALITY / UMWELT/RAUMLUFTQUALITÄT


TVOC after 28 days / TVOC (28 Tage)	ISO 16000-6	micrograms/m ³	<10	<10
Certification / Zeugnis /	-	-	Floorscore®	Floorscore®

CE MARKING / CE KENNZEICHNUNG

	EN 14041	   
--	----------	---

(1) Regarding the resistance to chemicals, please download the corresponding leaflet from our website.
 (2) The implementation of an effective cleaning method is the best defence against infection.

 The information contained in this document is valid from 01/04/2021 and is subject to change at any time without notice.
 In the context of constantly changing technology, our customers are responsible, prior to any use, for checking with us that this document is the version in force. Rubber leaves indelible stains on vinyl floorings: do not use mats with rubber backing and replace tubular furniture feet with those made of PVC or polyamide. Place mats of sufficient length at entrances to reduce outside sources of dirt.

 **WICHTIG:** Alle Angaben in dieser Karte entsprechen dem Kenntnisstand zum Zeitpunkt der Drucklegung. Im Einzelfall kann für deren Vollständigkeit, Richtigkeit und Anwendbarkeit keine Gewähr übernommen werden. Die aktuellste Version der technischen Daten, weitere Informationen und Downloads finden Sie unter: www.gerflor.de. Bestimmte Gummiarten (z.B. Stuhl- und Möbelfüße, Matten mit Gummirücken) hinterlassen bei längerer Einwirkung Verfärbungen auf elastischen Bodenbelägen, die nicht mehr zu entfernen sind. Dies kann vermieden werden, wenn ausschließlich Füße oder Matten aus nicht verfärbenden Gummiqualitäten, PVC oder Polyethylen verwendet werden. Verwenden Sie Eingangsmatten ausreichender Größe, um den Schmutzeintrag zu reduzieren.

WE CARE | WE ACT. Our Commitments for a Sustainable future

 CARBON FOOTPRINT* -20 % kg CO ₂ equivalent/m ² between 2020 and 2025	 BIOSOURCED CONTENT*** 10 % by 2025	 RECYCLED CONTENT 30 % by 2025	 ADHESIVE FREE** 35 % by 2025	 ANNUAL VOLUME RECYCLED 60 000 t by 2025
---	---	--	---	--

* Scopes 1 and 2 defined in the GHG protocol *** % of activity with biosourced materials ** % of activity - adhesive free solution

