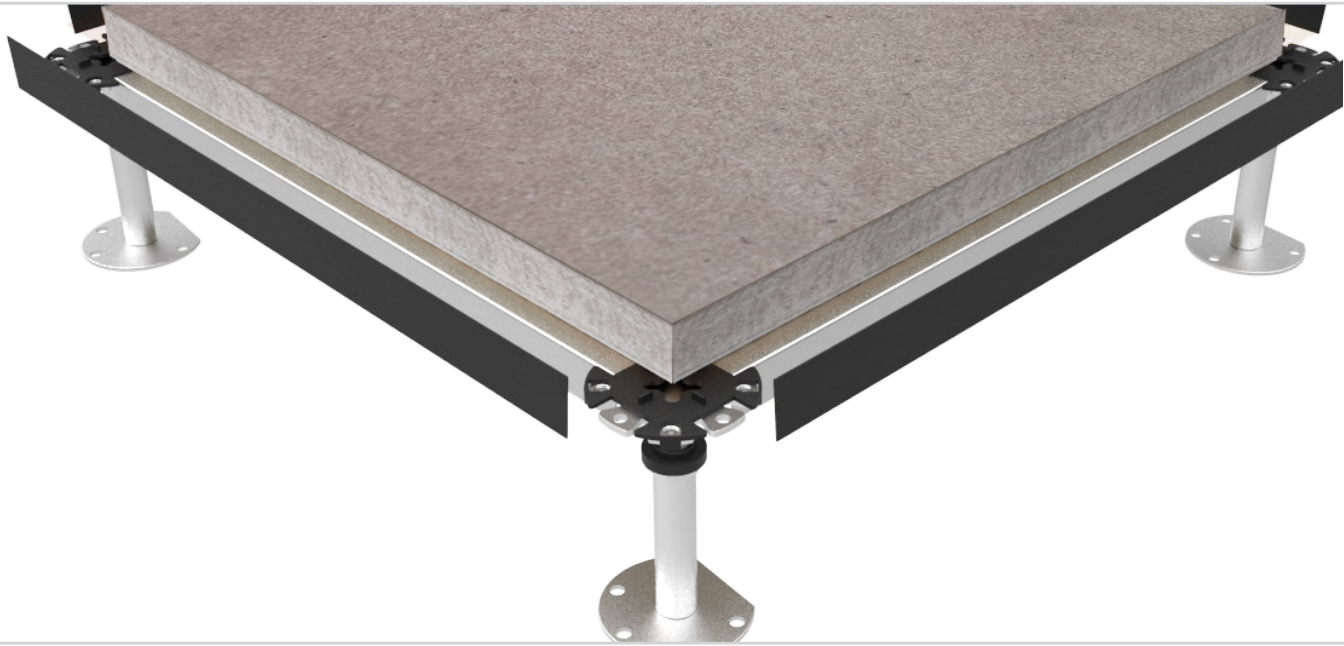


RAISED FLOOR PANEL

CALCIUMSULFAT





The raised floor with the best price-performance ratio

Calcium sulphate, a natural raw material, also well known as gypsum, is mined in open cast mines. Raised floor panels made of calcium sulphate have extremely high densities and are therefore extremely rigid. Gypsum has very good properties in terms of load bearing and fire resistance as well as acoustic.

Due to the used materials which are gypsum, water and paper fibers, the emission in rooms is zero.

Calcium sulphate panels are offering a high flexibility and are the most versatile product family in our portfolio. Thicknesses from 16 to 42 mm are available.

Load capacity from 1 to 20 kN.

Raised floor made of gypsum is applicable with almost every type of covering.

TECHNICAL DATA

Panel

Admeasurement	600 x 600 mm (other sizes on request)
Thickness	16 - 42 mm
Topside	aluminum foil, steel sheet, PVC, Lino, rubber, parquet, laminate, stone, carpet
Bottomside	aluminum foil, steel sheet
Systemweight	40 - 90 kg/m ²
Material	calciumsulfate panel

Substructure

Typ BS M 16 FFH to	440 mm
Typ CS M 20 (24x2) FFH to	1450 mm
Typ DS M 20 (26x3) FFH to	2000 mm

Load bearing capacity

Point load	2 kN - 20 kN
nach DIN EN 12825	class 1 - 6
Ultimate load	4 kN - 40 kN

Certificate of conformity SFE

according to DIN EN 12825, SFE	included
--------------------------------	----------

Distributed load

No norm	10 - 80 N/m ²
---------	--------------------------

Fire protection

Building material class	EN 1350 1-1	A2 - S1, D0
Fire resistance class	EN 1366	up to REI 30

Noise reduction acc. DIN EN 10848

		horizontal		vertical
		Ln,f,w	Dn,f,w in dB	ΔLw in dB (foot-)
Topside	without	68	49	17
Topside	Carpet (18dB)	43	49	33



Weiss Doppelbodensysteme GmbH
Im Winkel 4
74589 Satteldorf
+49 7951 317 92 - 00

Email: info@weiss-dbs.de
Web: www.weiss-dbs.de

